

Nikon

Digital Camera D100

Quick Start Guide



This guide gets you up and running with your Nikon digital camera at the most basic "point-and-shoot" settings. Once you have taken a few shots, read the reverse side of this sheet for information on copying pictures to your computer using Nikon View.

For complete information on using the D100, refer to the *Nikon Guide to Digital Photography* provided with your camera.

Unpack the camera

Be sure all items listed here were included with your camera.

NOTE: Memory cards are sold separately.

- 1 D100 camera
- 2 BF-1A body cap (attached to camera)
- 3 DK-10 Viewfinder eyepiece cup (attached to camera)
- 4 BM-2 LCD monitor cover (attached to camera)
- 5 Quick Start Guide (this guide)
- 6 Nikon Guide to Digital Photography
- 7 Warranty
- 8 Important Information
- 9 DK-5 eyepiece cap
- 10 AN-D100 strap
- 11 EN-EL3 rechargeable li-ion battery with terminal cover (instruction manual included)
- 12 MH-18 quick charger with power cable (instruction manual included)
- 13 EG-D100 video cable
- 14 UC-E4 USB cable
- 15 Nikon View CD-ROM
- 16 Nikon View Reference Manual CD-ROM



Use Only Nikon Brand Electronic Accessories

Your Nikon D100 digital camera is designed to the highest standards and includes complex electronic circuitry. Only Nikon brand electronic accessories (including battery chargers, batteries, and AC adapters) certified by Nikon specifically for use with your Nikon digital camera are engineered and proven to operate within the operational and safety requirements of this electronic circuitry.

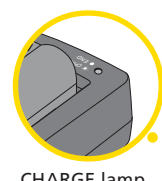
THE USE OF NON-NIKON ELECTRONIC ACCESSORIES COULD DAMAGE YOUR CAMERA AND MAY VOID YOUR NIKON WARRANTY.
For more information about Nikon brand accessories, contact your local authorized Nikon dealer.

To Users of Digital Cameras with Interchangeable Lenses: Foreign Matter on the CCD

Nikon takes every possible precaution to prevent foreign matter from coming into contact with the CCD during production and shipping. The D100, however, is designed to be used with interchangeable lenses, and foreign matter may enter the camera when lenses are removed or exchanged. Once inside the camera, this foreign matter may adhere to the CCD, where it may appear in photographs taken under certain conditions. To prevent foreign matter from entering the camera, do not exchange lenses in dusty environments. To protect the camera when no lens is in place, be sure to replace the body cap provided with the camera, being careful to first remove all dust and other foreign matter that may be adhering to the body cap.

Should foreign matter find its way onto the CCD, clean the CCD as instructed in the camera manual or have the CCD cleaned by authorized Nikon service personnel. Photographs affected by the presence of foreign matter on the CCD can be retouched using the clean image options available in some third-party imaging software.

1



Charge the battery

Charge the EN-EL3 battery using the MH-18 quick charger provided with your camera.

The CHARGE lamp will blink orange while charging. The CHARGE lamp will remain lit and glow orange when charging is complete.

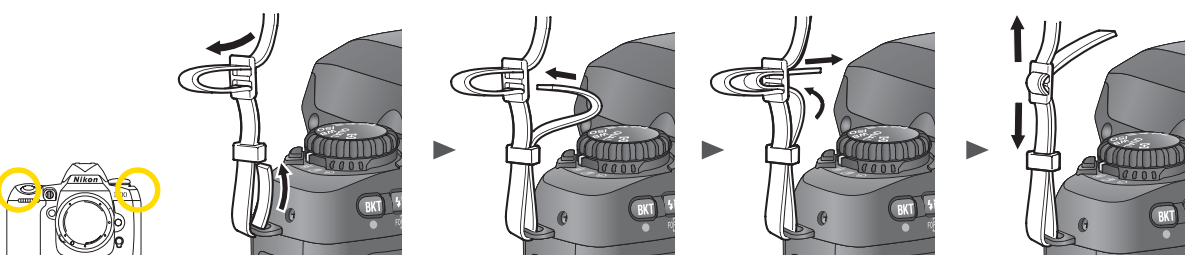
An exhausted battery will take approximately two hours to recharge.

For details, see the documentation provided with your battery and charger.

2

Attach the strap

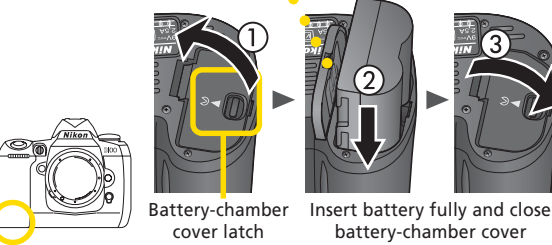
Attach the camera strap to the inlets on both sides of the camera body as shown.



3



Label on underside of battery-chamber cover shows proper battery orientation



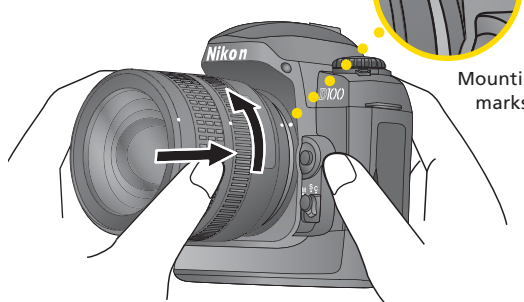
1 Battery-chamber cover latch
2 Insert battery fully and close battery-chamber cover

Insert the battery

- 1 Turn the camera off.
- 2 Slide the battery-chamber cover latch toward the **3** mark and open the battery-chamber cover (1). Slide the battery into the battery chamber as shown (2). Close the battery-chamber cover (3).
- 3 Turn the camera on and check the battery level in the control panel.

After inserting the battery, set the date and time (see the lower right corner of this guide).

4

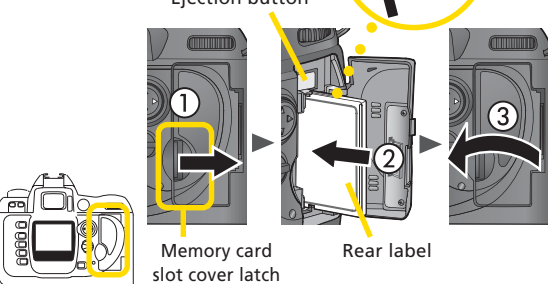


Attach a lens (available separately)

- 1 Turn the camera off.
- 2 Keeping the mounting marks aligned as shown left, position the lens in the camera's bayonet mount. Avoid pressing the lens-release button and rotate the lens counterclockwise until it clicks into place.
- 3 Lock aperture at the minimum setting (highest f/-number). This step is not necessary for type G lenses.

To take full advantage of the features offered by the D100, use a type G or CPU Nikkor lens.

5

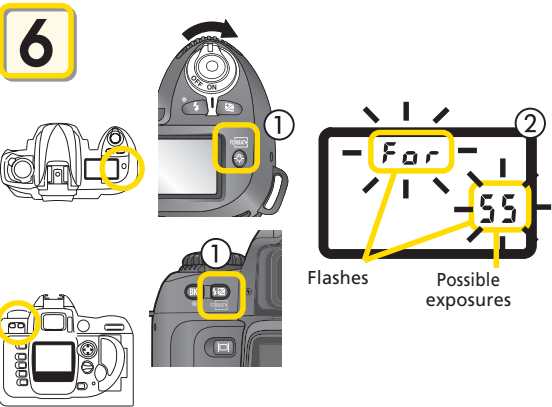


Insert a memory card (available separately)

- 1 Turn the camera off and unlatch and open the card-slot cover (1).
- 2 Insert the memory card with the rear label toward the monitor, sliding the card in until it is fully seated in the contacts at the back of the slot (2) and the eject button pops up. Close the card slot cover (3).

The memory card slot slopes slightly toward the monitor. Match the angle of the memory card slot when inserting memory cards.

6

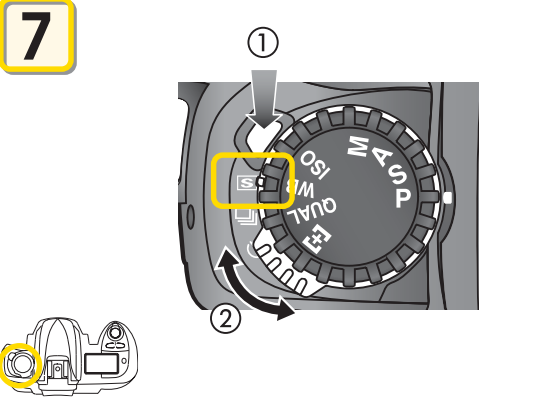


Format the memory card

Note that formatting memory cards permanently deletes any data they may contain.

- 1 Turn the camera on.
- 2 Hold the **1/2** (1/2) and **1/2** (1/2) buttons down together for approximately two seconds (1). **F** **0** **r** and the possible number of exposures will flash in the control panel display (2).
- 3 Push the **1/2** (1/2) and **1/2** (1/2) buttons again to format the card. During formatting, the letters **F** **0** **r** will be appear in the frame-count display. When formatting is complete, the frame-count display will show the possible number of exposures.

7

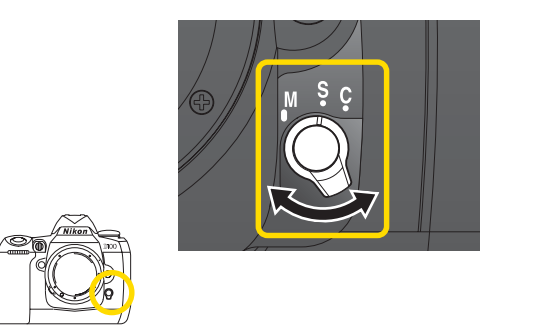


Set the shooting mode to S (single frame)

The D100 offers three shooting modes: single frame, continuous, and self-timer. To select single frame (the default setting), hold down the shooting-mode dial lock release (1) and rotate the shooting mode dial to **S** (2).

For more information on shooting mode, see page 41 of the *Guide to Digital Photography*.

8



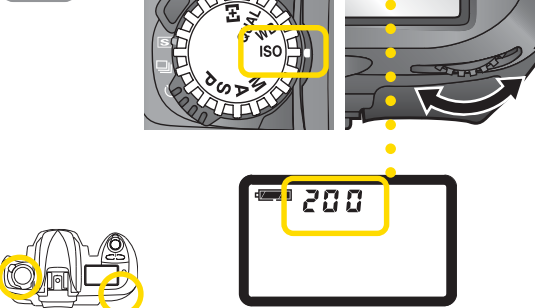
Set the focus mode to S (single-servo autofocus)

In single-servo autofocus, the camera will focus when the shutter-release button is pressed halfway. Focus will lock while the shutter-release button is pressed halfway. Photographs can only be taken when the camera is in focus.

To select single-servo autofocus (the default setting), rotate the focus-mode dial until it clicks into place pointing to **S**.

For more information on focus mode, see page 63 of the *Guide to Digital Photography*.

9



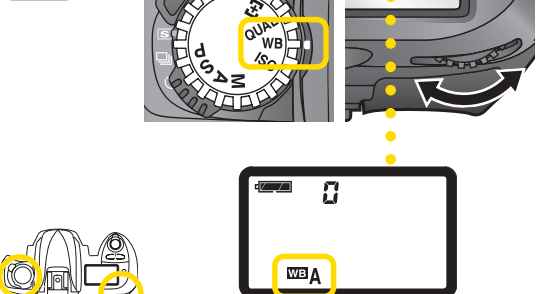
Set sensitivity (ISO equivalency) to ISO 200 equivalent

Sensitivity (the digital-camera equivalent of film speed) can be set between values approximately equivalent to ISO 200 and ISO 1600 in increments of 1/3 EV.

To set sensitivity to a value approximately equivalent to ISO 200 (the default value), turn the function dial to **ISO** and rotate the main command dial until **200** is displayed in the control panel.

For more information on sensitivity, see page 48 of the *Guide to Digital Photography*.

10



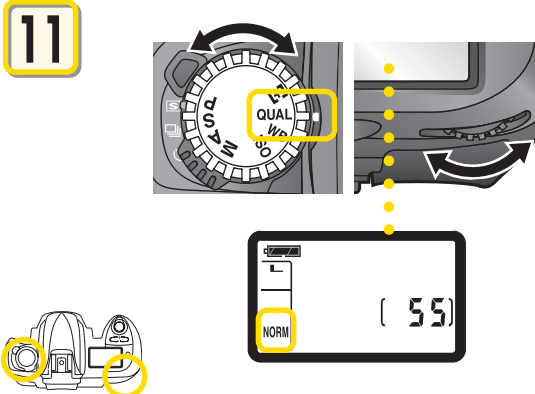
Set white balance to A (auto)

The D100 offers a choice of eight white balance modes according to the color temperature of the light source.

To choose auto white balance (the default setting), turn the function dial to **WB** and rotate the main command dial until **A** (auto) is displayed in the control panel.

For more information on white balance, see page 50 of the *Guide to Digital Photography*.

11



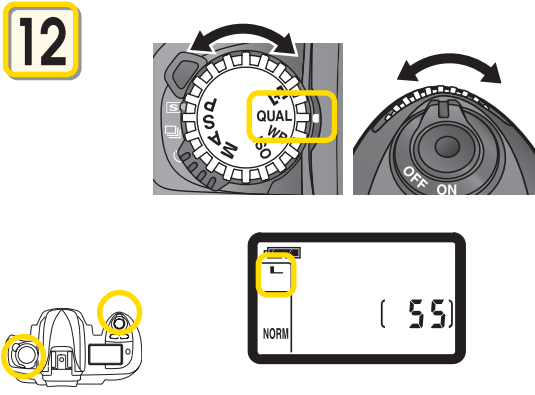
Set image quality to NORM (JPEG normal)

Turn the function dial to **QUAL** and rotate the main command dial until **NORM** (JPEG normal, the default setting) is displayed in the control panel.

For more information on image quality, see page 44 of the *Guide to Digital Photography*.

The number of possible exposures depends on the capacity of the memory card used.

12



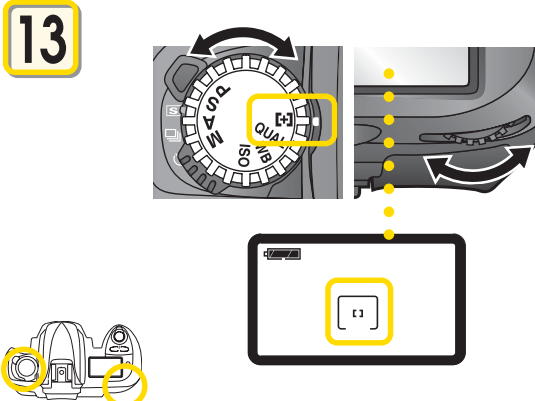
Set image size to L (large)

Turn the function dial to **QUAL** and rotate the sub-command dial until **L** (large, the default setting) is displayed in the control panel.

For more information on image size, see page 46 of the *Guide to Digital Photography*.

The number of possible exposures depends on the capacity of the memory card used.

13

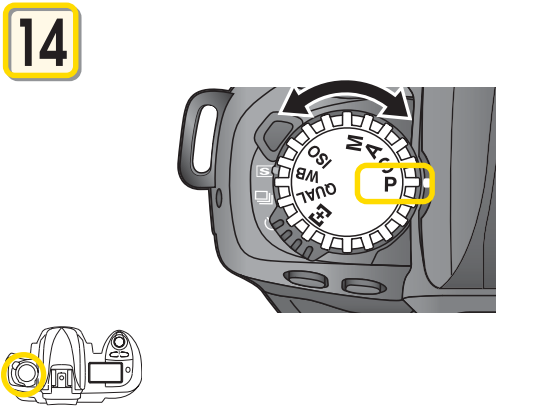


Set AF-area mode to [] (single-area AF)

Turn the function dial to **AF** and rotate the main command dial until **[]** (single-area AF, the default setting) is displayed in the control panel.

For more information on AF-area mode, see page 65 of the *Guide to Digital Photography*.

14

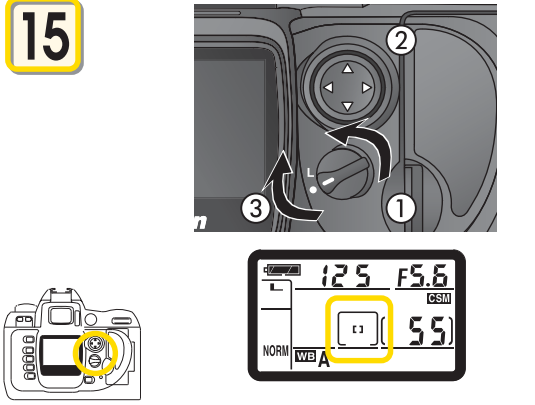


Set the function dial to P (auto multi program exposure mode)

Turn the function dial to **P** (auto multi program exposure mode, the default setting).

For more information on exposure mode settings, see page 76 of the *Guide to Digital Photography*.

15

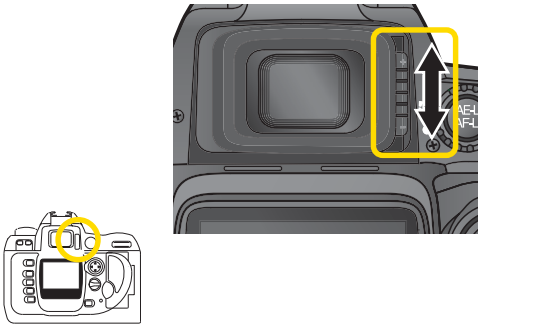


Choose the center focus area

- 1 Turn the multi-selector lock dial to **•** to unlock the multi-selector (1).
- 2 Use the multi-selector to select the center focus area (the default setting) in the viewfinder or control panel (2).
- 3 Return the multi-selector lock dial to **L** (3). While the multi-selector lock dial is in this position, the selected focus area will not change when the multi-selector is pressed. The multi-selector can still be used to navigate the camera menus.

The number of possible exposures depends on the capacity of the memory card used.

16



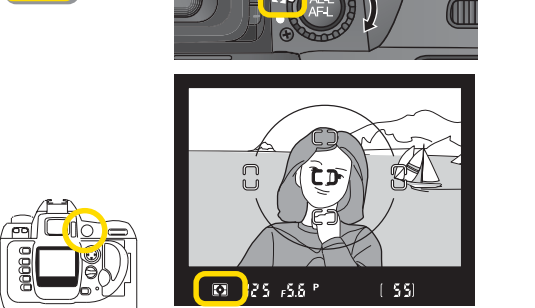
Focus the viewfinder

To adjust viewfinder focus, slide the diopter adjustment control up and down until the focus brackets in the viewfinder are in sharp focus.

If necessary, you can remove the rubber viewfinder eyepiece cup when adjusting diopter; when replacing the cup, the lettered face should be down.

When operating the diopter control with your eye to the viewfinder, care should be taken to avoid accidentally putting your fingers or fingernails in your eye.

17

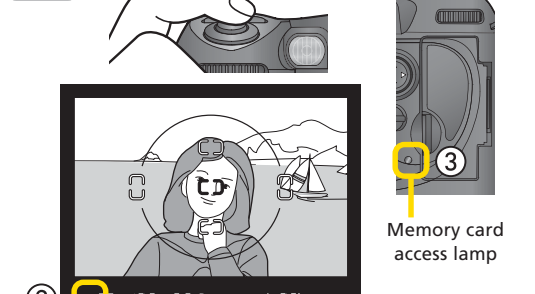


Set the metering selector to matrix metering

Set the metering selector set to **matrix** (matrix metering – the default setting). A **matrix** icon will appear in the viewfinder when the shutter-release button is pressed halfway.

For more information on metering, see page 75 of the *Guide to Digital Photography*.

18



Frame your photograph and shoot

Compose your photograph with your subject in the center of the frame and press the shutter-release button halfway (1). Confirm that the in-focus indicator (●) glows steadily in the viewfinder (2).

Press the shutter-release button the rest of the way down to take the photograph. While the photograph is being recorded to the memory card, the card access lamp next to the memory card slot will light (3).

Do not turn the camera off or remove the memory card until the lamp has gone out.

Playing Photographs Back

Photographs can be played back in the monitor any time after shooting, allowing you to check the results of earlier photographs and choose a better angle or adjust lighting for your next shot. Unwanted pictures can be deleted instantly to make room for more photographs on the memory card.

Viewing Photographs

- 1 Insert the memory card containing the photos you want to view into the camera.

- 2 Turn the camera on.

- 3 Press the **1/2** button.

- 4 The most recent photograph on the memory card will be displayed in the monitor.

- Pressing the **1/2** button or the shutter-release button halfway while viewing photographs will turn the monitor off.

- The monitor will turn off automatically to save power if no operations are performed for the time specified (default 20 s) in Custom Setting 6 (Monitor Off).

- When the monitor turns off, press the **1/2** button again to return to playback mode.

- 5 Press the multi-selector down to view photos in the order recorded, up to go back.

Viewing Multiple Photographs

By pressing the **1/2** button and rotating the main command dial, you can display images in "contact sheets" (thumbnails) as follows: single image ↔ four thumbnails ↔ nine thumbnails ↔ single image.

For details, see the *Guide to Digital Photography*, page 116.

Zooming in for a Closer Look

- 1 If no image is displayed in the monitor, press the **1/2** button.

- 2 Press the **1/2** button to zoom in on the image displayed in single-image playback or on the image currently selected in thumbnail playback.

- 3 You can also zoom in on the image by pressing the **1/2** button and rotating the main command dial to the right. Press the **1/2** button and rotate the main command dial to the left to zoom out.

Use the multi-selector to view areas of the image not visible in the monitor.

- 4 Press **1/2** to cancel zoom.

Deleting Photographs

- 1 If no image is displayed in the monitor, press the **1/2** button.

- 2 Press the multi-selector up or down to display the photo you want to delete.

- 3 Press the **1/2** button.

- 4 A confirmation dialog box is displayed. Press the multi-selector up or down to highlight **YES**, press the **1/2** button to select and delete the photo.

Set the Time and Date

Follow the steps below to set the time and date. The time and date will be recorded with all pictures. If you have not set the time and date, (the **CLOCK** icon in the control panel will flash), the time and date may not be correct but will still be recorded. For more information on the camera's internal clock-calendar, see page 19 of the *Guide to Digital Photography*.

- 1 Turn camera on
- 2 Display camera menus
- 3 Display SET UP menu
- 4 Position cursor in SET UP menu
- 5 Highlight Date
- 6 Display Date menu
- 7 Edit Year
- 8 Select next item. Repeat Steps 7–8 to set Month, Day, Hour, Minute, and Second
- 9 Save changes to settings and return to SET UP menu

► Viewing Pictures on Your Computer Using Windows

OS: Pre-installed versions of Windows XP Home Edition/Professional, Windows 2000 Professional, Windows Millennium Edition (Me), Windows 98 Second Edition (SE)

Pictures taken with your D100 can be transferred to a computer, where they can be viewed and organized. To transfer your pictures, you will need to install Nikon View as described below. For complete instructions on using Nikon View, see the *Nikon View Reference Manual* (on CD-ROM).

Depending on the version of Nikon View installed, the installation process and the dialogs and messages displayed may differ from those described here.

Before Installing Nikon View:

- Turn off any virus-checking software
- Exit all other applications that may be running

Uninstall Existing Versions of Nikon View and Nikon Capture Version 1.x

Before installing Nikon View, you will need to uninstall Nikon Capture version 1.x (if installed) and any earlier versions of Nikon View.

Windows XP Home Edition/Professional, Windows 2000 Professional
When installing, using, or uninstalling Nikon View, log on as the “Computer administrator” (Windows XP Home Edition/Professional) or “Administrator” (Windows 2000 Professional).

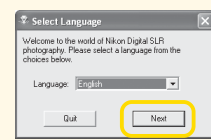
Connecting the Camera to a Computer

Be sure to install Nikon View before connecting the camera to your computer. If the Add New Hardware Wizard is displayed when the camera is connected, click Cancel to exit the wizard.

Install Software

a Turn the computer on and wait for the operating system to start up.

b Insert the Nikon View installer CD-ROM into the CD-ROM drive. The Install Center program will launch automatically and a language selection dialog will be displayed. Select a language and click **Next**.

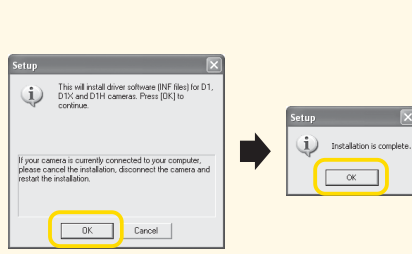
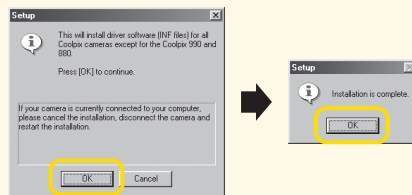
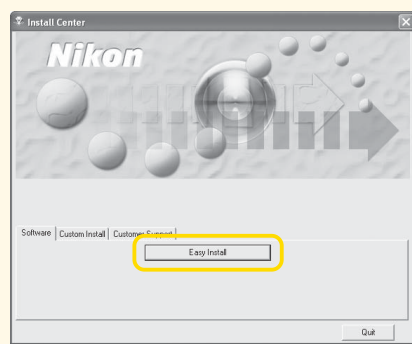


If the Language Selection Dialog Is Not Displayed

Select My Computer from the Start menu (Windows XP Home Edition/Professional); in other versions of Windows, double-click the My Computer icon on the desktop) and double-click the CD-ROM (NKVIEW6) icon in the “My Computer” window.

c Click **Easy Install**. The standard install includes:

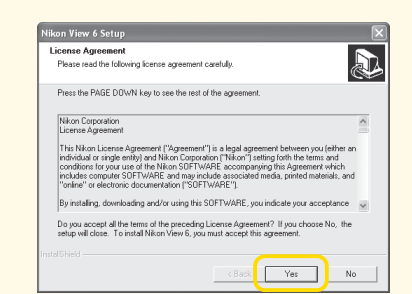
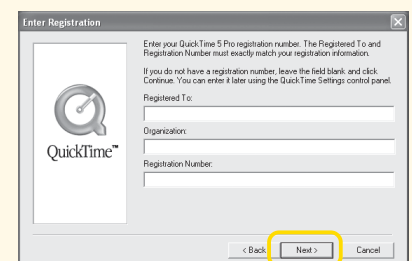
- Driver for D1 series cameras
- Coolpix Camera Drivers (Windows 98 SE only)
- Quick Time 5
- Nikon View



If you are using any operating system other than Windows 98 SE, the dialog shown at right will be displayed when you click Easy Install. Click **OK** to begin installation of the D1, D1x and D1h Camera Driver, and click **OK** again once installation is complete.

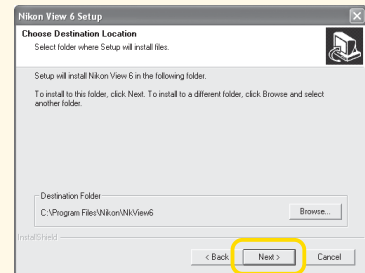
(Under Windows 98 SE installation of the D1, D1x and D1h Camera Driver follows installation of the Coolpix Camera Driver, above.)

d Installation will continue with Quick Time 5. No registration number is required; leave the registration information blank and click **Next**.

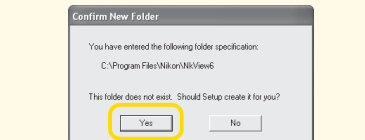


e The Nikon View setup program will now start. After reading the license agreement, click **Yes** to accept the agreement and proceed with installation.

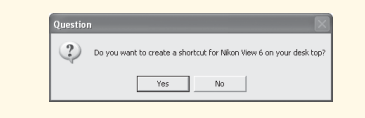
f The destination folder for Nikon View will be displayed under “Destination Folder”. Click **Next** to install Nikon View to this folder, or click **Browse** to select another destination.



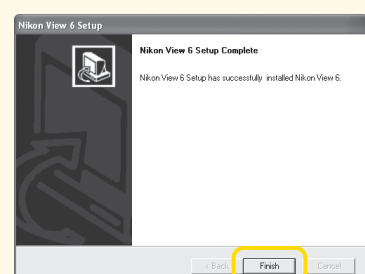
g Click **Yes** to create the destination folder.



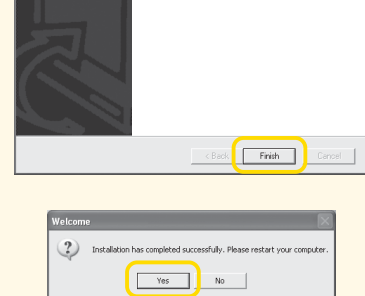
h Click **Yes** to create a shortcut to Nikon View on the desktop, **No** to proceed without creating a desktop shortcut.



i Click **Finish** to exit the Nikon View installer.



j Click **Yes** to restart your computer.



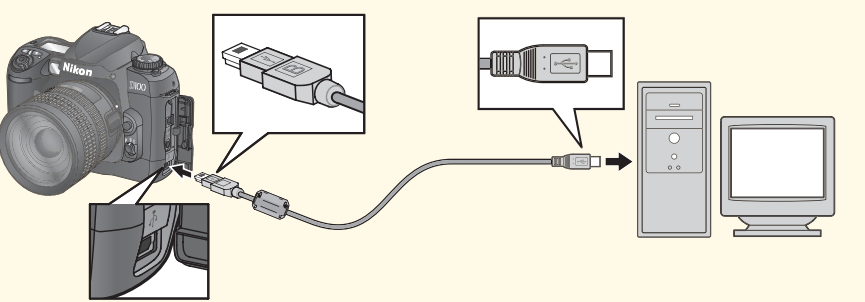
k Once the computer has restarted, remove the Nikon View installer CD-ROM from the CD-ROM drive.

If the Welcome program starts up again after you have restarted the computer, click **Quit** to exit the Welcome program and then remove the CD-ROM from the CD-ROM drive.

Copy Pictures to Your Computer

Use a Reliable Power Source
When transferring pictures between the camera and the computer, use a fully-charged EN-EL3 battery. If in doubt, charge the battery before beginning transfer or use an EH-5 AC adapter (available separately). **Do not, under any circumstances, use another make or model of AC adapter.**

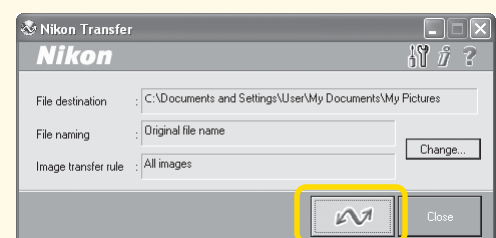
a Turn the camera off. Connect the camera to your computer as shown in the illustration, using the USB cable provided.



USB Hub

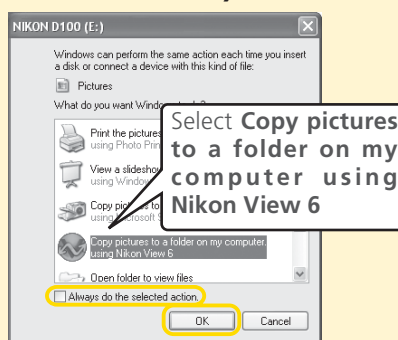
The camera may not function as expected when connected via a USB hub or keyboard.

b Turn the camera on. Nikon View will automatically detect the camera and display the Nikon Transfer window. Click the [Transfer] button.



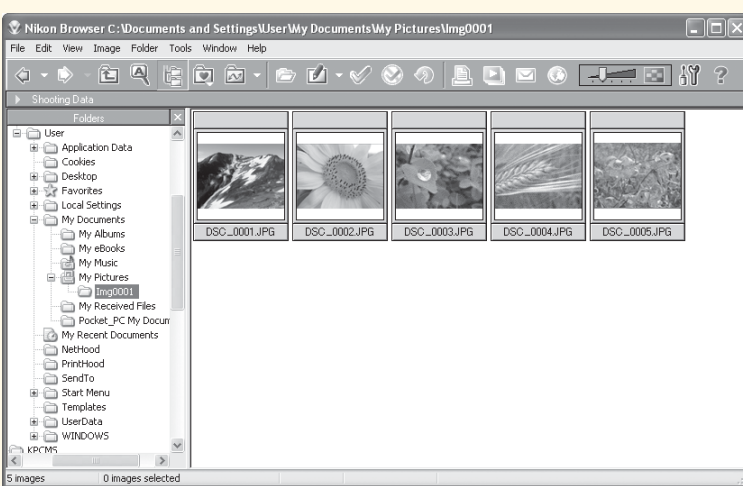
AutoPlay (Windows XP Home Edition/Professional)

When you turn the camera on, the dialog shown at right will be displayed. Select **Copy pictures to a folder on my computer using Nikon View 6** and click **OK** to start Nikon View. To bypass this dialog in the future, check **Always do the selected action**.



See “Troubleshooting” in the *Nikon View Reference Manual* for information on what to do if Nikon Transfer fails to start automatically.

c When all pictures have been copied, the Nikon Browser window will be displayed in the computer monitor.

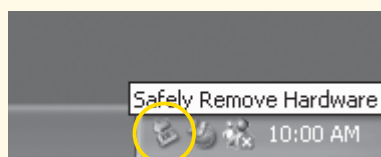


By default, pictures will be copied to the folder “Imgnnnn” in the My Documents folder or My Pictures folder, where “nnnn” is a four-digit number (starting from 0001) assigned automatically by Nikon View.

d After confirming that transfer is complete, remove the camera from the system as described below.

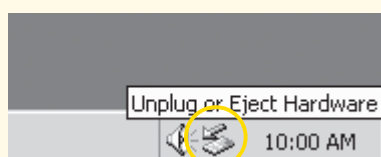
Windows XP Home Edition/Professional

Click the “Safely Remove Hardware” icon () in the taskbar and select **Safely remove USB Mass Storage Device** from the menu that appears.



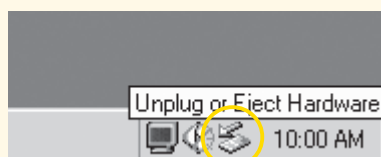
Windows 2000 Professional

Click the “Unplug or Eject Hardware” icon () in the taskbar and select **Stop USB Mass Storage Device** from the menu that appears.



Windows Millennium Edition (Me)

Click the “Unplug or Eject Hardware” icon () in the taskbar and select **Stop USB Disk** from the menu that appears.



Windows 98 Second Edition (SE)

In My Computer, click with the right mouse button on the removable disk corresponding to the camera and select **Eject** from the menu that appears.



Enjoying Pictures on Your Computer



Make prints on your personal color printer.

Post pictures on your web site. Make an on-line photo album

at <http://www.nikonphotoshare.com/>

European customers can share their pictures on-line in password-protected “photo albums.” Once you have used the simple on-line tools to upload your pictures, you can send invitations to selected guests to view your album at their leisure. You can even order prints on-line.

► Viewing Pictures on Your Computer Using a Macintosh

OS: Mac OS 9.0–9.2, Mac OS X (10.1.2–10.2)

Pictures taken with your D100 can be transferred to a computer, where they can be viewed and organized. To transfer your pictures, you will need to install Nikon View as described below. For complete instructions on using Nikon View, see the *Nikon View Reference Manual* (on CD-ROM).

Depending on the version of Nikon View installed, the installation process and the dialogs and messages displayed may differ from those described here.

Before Installing Nikon View:

- Turn off any virus-checking software
- Exit all other applications that may be running

Uninstall Existing Versions of Nikon View and Nikon Capture Version 1.x

Before installing Nikon View, you will need to uninstall Nikon Capture version 1.x (if installed) and any earlier versions of Nikon View.

Mac OS X

When installing, using, or uninstalling Nikon View, log in as the “Admin”.

Connecting the Camera to a Computer

Be sure to install Nikon View before connecting the camera to your computer. If the Add New Hardware Wizard is displayed when the camera is connected, click Cancel to exit the wizard.

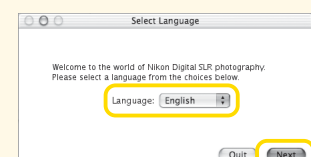
Install Software

a Turn the computer on and wait for it to start up.

b Insert the Nikon View installer CD-ROM into the CD-ROM drive.

Mac OS X

After inserting the Nikon View installer CD-ROM into the CD-ROM drive, double-click the CD-ROM (Nikon View 5) icon on the desktop and then double-click the Welcome icon. A language-selection dialog will be displayed; select a language and click **Next**.

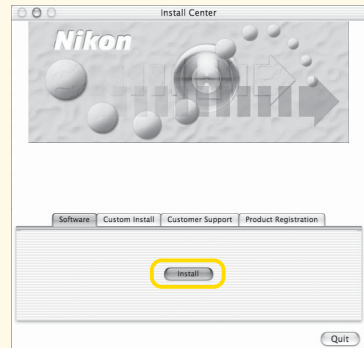


Mac OS 9

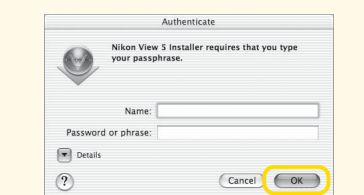
The language-selection dialog will be displayed automatically when you insert the Nikon View installer CD-ROM.

c Click **Easy Install** to begin installation of the following software:

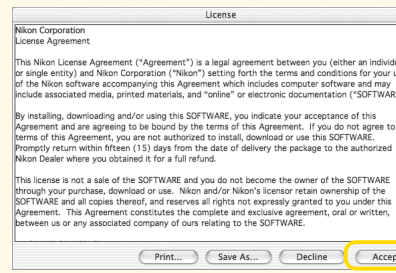
- Nikon View
- Quick Time 5 (Mac OS 9 only)



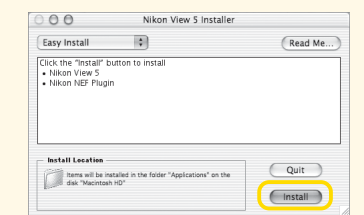
d Enter your administrator name and password and click **OK** (Mac OS X only).



e Installation of Nikon View opens with a license agreement. Click **Accept** to accept the agreement and proceed with installation. The Nikon View “ReadMe” will then be displayed. This document contains important information; be sure to read it thoroughly before clicking **Continue** to proceed with installation.



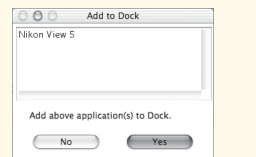
f Click **Install** to install Nikon View.



g Add Nikon View to the Dock or create an alias on the desktop.

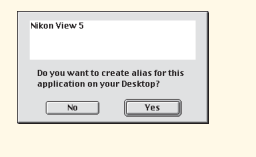
Mac OS X

Click **Yes** to add Nikon View to the Dock, **No** to proceed without adding Nikon View to the Dock.

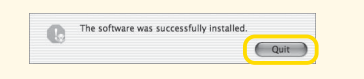


Mac OS 9

Click **Yes** to create an alias for Nikon View on the desktop, **No** to proceed without creating an alias.

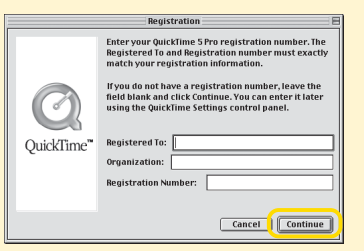


h Click **Quit** to complete installation of Nikon View.

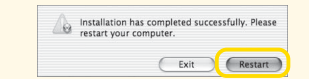


Installing Quick Time 5 (Mac OS 9 Only)

Under Mac OS 9, installation of Quick Time 5 will begin when installation of all other software is complete. Follow the on-screen instructions to complete installation. When the Registration dialog is displayed, click **Continue**. **Do not supply registration information.**



i Click **Restart** to restart your computer.



j Once the computer has restarted, remove the Nikon View installer CD-ROM from the CD-ROM drive.

If the Welcome program starts up again after you have restarted the computer, click **Quit** to exit the Welcome program and then remove the CD-ROM from the CD-ROM drive.

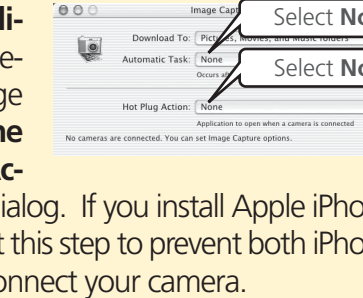
Copy Pictures to Your Computer

Use a Reliable Power Source

When transferring pictures between the camera and the computer, use a fully-charged EN-EL3 battery. If in doubt, charge the battery before beginning transfer or use an EH-5 AC adapter (available separately). **Do not, under any circumstances, use another make or model of AC adapter.**

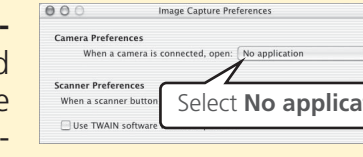
Mac OS X (Version 10.1.2–10.1.5)

Before connecting the camera, select **Applications** from the Finder **Go** menu and double-click the **Image Capture** icon. The Image Capture dialog will be displayed. Select **None** from the **Automatic Task** and **Hot Plug Action** menus and close the Image Capture dialog. If you install Apple iPhoto software after you install Nikon View, repeat this step to prevent both iPhoto and Nikon View from starting when you connect your camera.

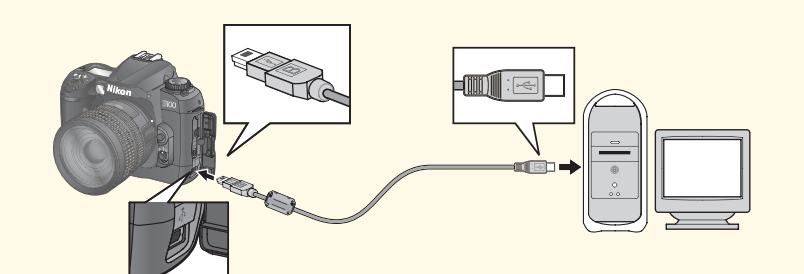


Mac OS X (Version 10.2)

Before connecting the camera, select **Applications** from the Finder **Go** menu and double-click the **Image Capture** icon. The Image Capture dialog will be displayed. Select **Preferences...** from the **Image Capture** menu to display the Image Capture Preferences dialog. In the **Camera Preferences** area, select **No application** from the “When a camera is connected, open” menu.



a Turn the camera off. Connect the camera to your computer as shown in the illustration, using the USB cable provided.

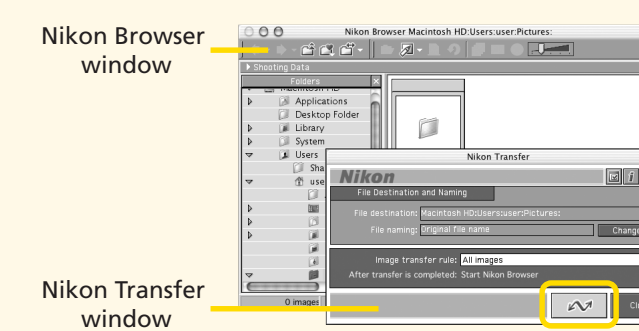
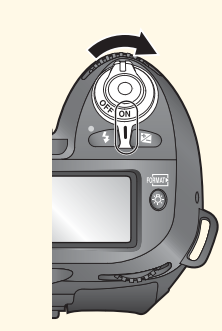


USB Hub

The camera may not function as expected when connected via a USB hub or keyboard.

b Turn the camera on. Nikon View will automatically detect the camera and display the Nikon Transfer window. Click the [Transfer] button.

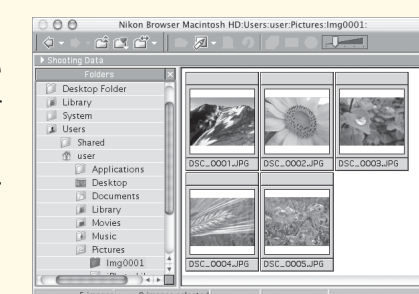
On a Macintosh, Nikon Transfer will start up after Nikon Browser has started.



See “Troubleshooting” in the *Nikon View Reference Manual* for information on what to do if Nikon Transfer fails to start automatically.

c When all pictures have been copied, they will be displayed in the Nikon Browser window.

By default, pictures will be copied to the folder “Imgnnnn” in the Pictures folder (Mac OS X) or Documents folder (Mac OS 9), where “nnnn” is a four-digit number (starting from 0001) assigned automatically by Nikon View.



d Be sure to drag the “NIKON_D100” (in Mac OS 9, “NIKON D100”) disk corresponding to the camera into the Trash before turning the camera off and disconnecting the USB cable.

